



camoplast

HI-PERFORMANCE TRACKS

GO WHERE WHEELS SIMPLY CAN'T

ATV/UTV TRACK SYSTEMS

Want to go further? Want to do more?

If you're not using your ATV or UTV all year round, it's time to convert your wheels to a Camoplast track system. Our systems are designed to transform your wheeler into a true four-season vehicle that is able to take on the deepest snow and the most challenging mud holes as well as operate on hard surfaced roads or the rockiest, roughest riverbed that you can find.

Only Camoplast will get you there

Operating your vehicle with a Camoplast track kit is comparable to operating a vehicle on wheels, with increased advantages, such as:

- ✓ **FLOATATION**
- ✓ **TRACTION**
- ✓ **STABILITY**
- ✓ **UTILITY**
- ✓ **GROUND CLEARANCE**



The best upgrade to your vehicle is a Camoplast four-season track system

You experience the advantages
from the get-go:



**Specifically adapted to
your vehicle**



**Maximum floatation
& traction**



**Reliable
performance**



**Easy steering &
safer than wheels**

OUR TRACK SYSTEMS AREN'T JUST TRACK SYSTEMS



SPECIFICALLY ADAPTED TO YOUR VEHICLE

Our track systems provide top overall performance.

- ✓ Engine-specific gearing makes the most of available power
- ✓ Model-specific adapter kits
- ✓ Carefully selected tracks
- ✓ Over 230 total combinations available



Our tracks will fit your machine... BIG OR SMALL

- Camoplast track systems are engineered for almost any new or older machine with a 300cc or larger engine. Every Camoplast track kit maximizes available horsepower and torque.
- Lighter weight, smaller displacement quads fitted with Camoplast track systems exhibit exceptionally good floatation in deep snow or wet, sucking mud.
- Camoplast track systems install easily on almost any machine with 300cc or greater displacement, and can be easily removed to switch the machine back to wheels later on.

Great performance on tracks is available for almost every ATV and UTV user, even with a smaller displacement machine, by choosing a Camoplast track system.



MAXIMUM FLOATATION & TRACTION

Our exclusive triangular geometry insures more even load distribution.

- Weight spread over a much larger area
- 2,000 to 2,470 square inches of floatation
- Far less down pressure – just 0.55 psi for 900-lb. ATV
- Vehicle simply doesn't sink like it would on wheels

Our tracks are engineered to provide more bite for superior traction and pulling.

- Spreads traction over large surface area to work with precision engineering features
- Fine-tuned track tread technology
- No compromise to vehicle carrying & pulling power



RELIABLE PERFORMANCE

Our track systems keep you moving when wheels just won't.

- Optimized rubber compounds for track performance & life
- No tires to get stuck, blow out, or suffer rim damage
- Impressive pulling capacity



EASY STEERING & SAFER THAN WHEELS

Our rigid track frame, anti-rotation feature, and track characteristics make steering easy.

- Reduced vibration
- Precise & stable handling
- Optimized traction on uneven surfaces
- Controlled speed
- Lowered center of gravity
- Longer & wider footprint for better stability





PLAY, WORK, EXPLORE... IN ALL 4-SEASONS

You'll be astounded at the versatility of your vehicle once you've installed your new tracks. By simply adding tracks, it will be able to navigate muddy embankments without any trouble.

Enjoy the great outdoors?

Get to your favorite hunting or fishing spot no matter how deep the snow, or how bad the mud. All the carrying and towing is maintained so you can still handle the same size supply loads.

Need to haul heavy loads?

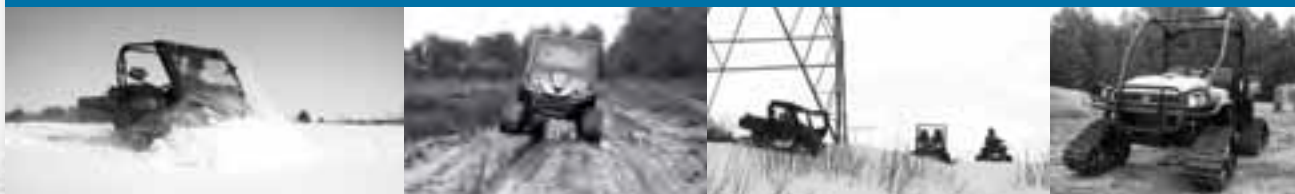
A foot or more of snow is no longer an obstacle. Bolt on your chain saw press, hook up the sled, load up the gear, pile on the luggage and get hauling.

Working in remote locations?

For farmers, ranchers and utility companies, a quad with tracks goes through snow, sand, mud, swamps, muskeg, and just about anything else.

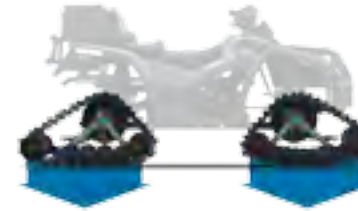
Simply love to explore?

If you want year-round access to the great outdoors, put a Camoplast track kit and enjoy the great outdoors regardless of the season.



WHY TRACKS ARE BETTER THAN WHEELS

Try driving your wheeled ATV or UTV in snow or on muddy ground. Spinning wheels dig into soft surfaces and get buried very quickly. Camoplast track systems will improve floatation and traction, and will take you where wheels simply can't.



For a 900 lbs ATV (including driver)
the average pressure on the ground in soft terrain is:

ON TRACKS: 0.55 PSI (3.79 KPa)
ON WHEELS: 2.00 PSI (13.79 KPa)



For a 1800 lbs UTV (including driver & passenger)
the average pressure on the ground in soft terrain is:

ON TRACKS: 0.90 PSI (6.82 KPa)
ON WHEELS: 3.90 PSI (26.89 KPa)



QUICK AND EASY INSTALLATION

Camoplast track kits are truly user-friendly. They can be removed and re-installed in about one hour. When removing and storing the tracks, following a few simple precautions will ensure your track conversion kit is ready to re-install with no extra work required.



INTERCHANGEABILITY

Camoplast track systems can be transferred from vehicle to vehicle. If you change make, model or year, Camoplast has available the parts and services to adapt your kit to the new ride.

THE PERFORMANCE IS IN THE DETAILS

DRIVE SPROCKETS



Camoplast drive sprockets are designed specifically for your vehicle and its engine for superior performance:

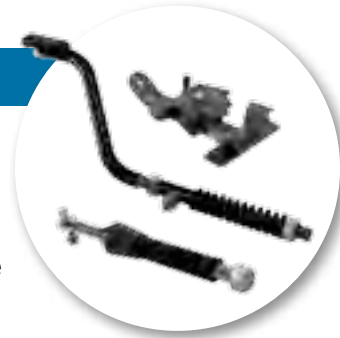
- Maintain engine's full power so it turns the track in all situations
- Adjusted to prevent overloading your clutch and engine

Available in multiple sizes: from 15 to 18 teeth

15 tooth for 300 to 400cc* 17 tooth for 550 to 700cc*
16 tooth for 400 to 500cc* 18 tooth for 700cc and up*

** May change depending on models.*

BRACKETS & MOUNTING KITS



Camoplast track systems feature vehicle-specific mounting systems to insure maximum performance:

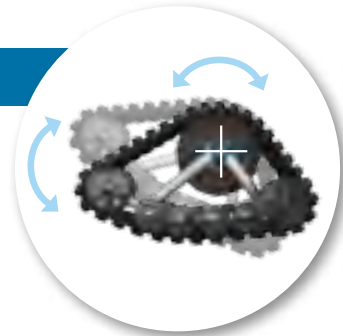
- Vehicle-specific application
 - Engineered to take the impact of every bump, jolt and crash to prevent vehicle damage
 - Easy installation
- Rear track spring anti-rotation system
 - Engineered to allow backing up over obstacles
- Model-specific mounting kits
 - Insure track system portability between brands and models – just change the mounting kit

RUBBER TRACKS



- Engineered specifically for ATV & UTV use
- Track length optimized for best overall combination of performance & comfort
- Lug height & profile carefully matched to vehicle type
- Proprietary rubber compounds developed from over 50 years of track building experience
- Made with innovative and precise manufacturing techniques

TRACK SYSTEM FRAMES



Our track system frames are engineered for less vibration and truly comfortable ride.

- Tough, lightweight design for durability & performance
- Easily sheds snow, mud, and vegetation
- Idler wheels geometry and position improve weight distribution
- Pivot in tandem at each end

That level of top performance is a direct result of matching Camoplast track system sprockets and mounting kits to your vehicle's engine size and power for maximum traction and no loss in carrying and towing capacity.



THE MOST ADVANCED FOUR-SEASON SYSTEM

The Camoplast T4S system is not just only the standard of the industry, it is also best performer in deep snow. Years of research and development have refined Camoplast to the point that it delivers optimum performance all year long regardless of weather or ground conditions.

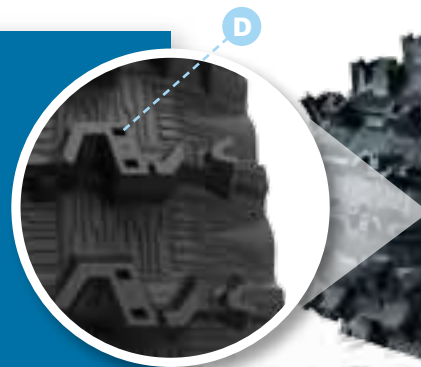
- ✓ **NEW two-year limited warranty**
- ✓ **Lightest weight in its category**
- ✓ **Allows use on smaller machines (300cc and up)**
- ✓ **Interchangeable with over 150 vehicle models**
- ✓ **Equipped with Flextrack™ in front**



Part of the reason is our exclusive Flextrack technology

Exclusive in front end featuring a radiused track shape offers unmatched user benefits

- Easy steering that is less tiring on long distances & in heavy work situations
- Absorbs bumps without transmitting major shocks to the handlebars or the power steering just like flat track would.
- Less vibration for more comfort & reduced fatigue
- Significant splatter reduction compared to a flat track



IDLER & MID-ROLLER WHEELS



Camoplast idlers and roller wheels are engineered tough for true four-season use. Now more durable than ever, they produce even less vibration, offer improved weight distribution, and resist ice build-up. Improved wheel geometry for better weight distribution

- Improved wheel geometry for better weight distribution
- Reduces vibration
- Improves long term track durability
- 100% icing or flat spot free
- Same 20mm wheel width
- Elastomeric outer band
- Sealed bearings for long life in rough conditions

A TANDEM STABILIZER

- On pressure point
- Absorbs shocks for a smoother ride

B INTERNAL DRIVE SYSTEMS

- Unique four-season riding solution
- Reduced friction
- Maximizes power delivery
- Minimizes splatter & accumulation

C HUB

- Outer seals improve bearing durability
- Stainless steel sleeves to reduce maintenance

D STUD READY TRACKS

Nothing can match metal track studs for traction on icy surfaces. Only Camoplast tracks are stud ready for maximum traction in icy conditions.

- Pre-marked stud locations for effective, long-lasting studding
- Drilling required for initial installation





PRECISION & STRENGTH

Specifically engineered for side-by-sides, the Camoplast UTV T4S is the most precise and robust track system for use in deep snow, swamps, marshes, mud and, muskeg. The Camoplast UTV T4S system features longer and wider tracks to accommodate the greater weight of side-by-side utility vehicles, and provides greater load capacity than any other track system.

- ✓ **Engine-specific gearing suitable for 400cc and larger**
- ✓ **Model-specific installation kits**
- ✓ **Interchangeable with other side-by-side brands & models**
- ✓ **NEW: two-year limited warranty**
- ✓ **Puncture-proof Absorb™ tires**



- Pioneered by Camoplast
- Maximize the shock absorption
- Improve reliability & ride quality

ABSORBS MORE THAN A STANDARD WHEEL

NEW WIDE, RUBBERIZED MID-ROLLER WHEELS



- Heavy duty construction
- Side wear resistant
- 100% icing or flat spot free
- Reduces vibration
- Two sealed bearings per wheels for long life in rough conditions
- Extra seal inside and rubber cap outside
- Improves long term track durability

HEAVY DUTY



A DUAL TANDEM STABILIZERS

- On each pressure point
- Absorb shocks
- Smoother ride

B INTERNAL DRIVE SYSTEMS

- Unique four-season riding solution
- Reduced friction
- Maximizes power delivery
- Minimizes splatter & accumulation

C HUB

- Outer seals improve bearing durability
- Stainless steel sleeves to reduce maintenance

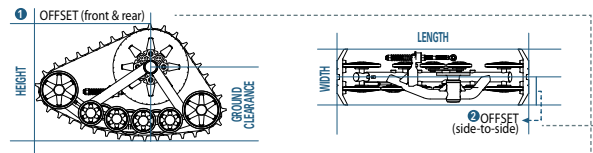
D STUD READY TRACKS

Nothing can match metal track studs for traction on icy surfaces. Only Camoplast tracks are stud ready for maximum traction in icy conditions.

- Pre-marked stud locations for effective, long-lasting studding
- Drilling required for initial installation

E

SPECIFICATIONS



Undercarriage	CAMOPLAST ATV T4S	CAMOPLAST UTV T4S
Weight	71 lbs (30 kg)	Front: 95 lbs (43 kg) Rear: 112 lbs (51 kg)
Offset (front & rear) ①	Front: 24 in (611 mm) Rear: 27 in (662 mm)	Front: 26.5 in (673 mm) Rear: 35 in (889 mm)
Offset (side-to-side) ②	6 in (153 mm)	7 in (178 mm)
Height	Front: 23.8 in (604 mm) Rear: 23.2 in (590 mm)	Front: 25 in (637 mm) Rear: 24.7 in (626 mm)
Length	Front: 40 in (1015 mm) Rear: 42.5 in (1081 mm)	Front: 42.5 in (1081 mm) Rear: 52 in (1321 mm)
Width	22 in (560 mm)	25 in (635 mm)
Mounting hardware weight	Approx. 6.25 lbs (2.75 kg)	Approx. 6.25 lbs (2.75 kg)
Rubber track		
Width	Front: 11.5 in (292 mm) Rear: 12.5 in (318 mm)	Front: 12.5 in (318 mm) Rear: 13.5 in (343 mm)
Length	Front: 93.4 in (2377 mm) Rear: 98.5 in (2507 mm)	Front: 98.5 in (2507 mm) Rear: 116.7 in (2964 mm)
Lug height	Front: 1 in (25 mm) Rear: 1.188 in (30 mm)	Front: 1 in (25 mm) Rear: 1 in (25 mm)
Performance		
Ground surface	2000 sq. in (1.30 sq.m)	2470 sq. in (1.59 sq. m)
Ground clearance (average)	Increases by 3 in (76 mm)	Increased by 5 in (127 mm)
Maintained speed (average)	2/3	2/3
Specification		
Drive Type	Internal drive	Internal drive
Rubber track	Front: Flex Rear: Flat	Front: Flat Rear: Flat
Frame	Carbon steel	Carbon steel
Sprocket	15 to 18 teeth	15 to 18 teeth
Wheel / Roulettes NEW!	134 & 202 mm encapsulated and sealed wheels including elastomer outer band	132 mm double bearing & sealed mid-roller wheels (width: 50 mm) 255 mm double bearing & sealed flat free tires
Anti-rotation	Redesigned mild steel anti-rotation Spring and progressive damper	Redesigned mild steel anti-rotation Spring and progressive damper
Hub and bearing	Cast steel multi-bolt (4) pattern hub	Cast steel multi-bolt (4-5) pattern hub
Guide	Molded UHMW	Extruded UHMW
Tandem & suspension	Mono front tandem on pivot point	Dual tandem on each pivot point
Maintenance		
Installation time	Approx. 1.5 h	Approx. 1.5 h
Subsequent	Less than 1 hour	Less than 1 hour

Note: Information may change depending on vehicles and models.

WORLD-CLASS SERVICE

The Camoplast reputation for technical expertise and service is second to none. Where ever you are located in the world, there is a Camoplast expert ready to respond to every question or need, and to help you get the most from your riding experience.

If you have a technical or customer service question, you can access Camoplast expertise through our many dealers and distributors across the globe or you can contact us directly.

Toll-free: **1-866-533-0008** (USA and Canada only). atvtracksystems@camoplastsolideal.com

WORLD-CLASS WARRANTY



To provide superior peace-of-mind for our users, Camoplast track conversion systems are covered by a best-in-class two-year limited warranty.



Scan the following QR code with your smart phone*.

* Charges for text messaging and data transfer may apply. Camoplast is on Facebook now, too.

Camoplast is the world leader in rubber tracks and undercarriage systems. Our advanced engineering know-how, state-of-the-art manufacturing facilities, and largest R&D team in the industry have made us the preferred choice of Original Equipment Manufacturers (OEM) around the world.

For utility operations, hunting, fishing, recreational off-trail riding, farming or ranching, Camoplast track systems deliver industry-leading performance, warranty and reliability.

Visit www.camoplastsolideal.com for more information and videos.

